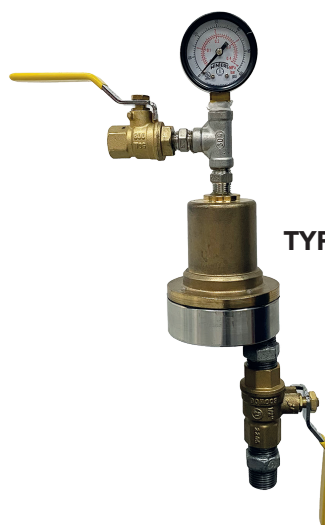


TYPE DA



TYPE DA/TRIM



Profit accelerator type DA is a low pressure accelerator designed for use with Profit dry alarm valves type DGACV and DFACV (all sizes). It allows for a quick action response of the dry alarm valve.

Characteristics

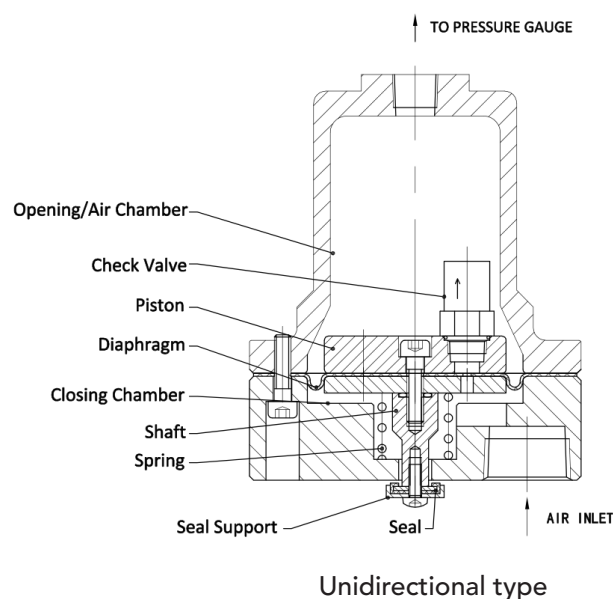
- Indoor use only.
- Fast response to air pressure variations.
- Activation range: 21-34 kPa / 3-5 psi.
- Connects directly onto the low pressure actuator upper chamber.
- Weight:
 - Type DA: 1,36 kg.
 - Type DA/TRIM: 2,08 kg.

Working pressure

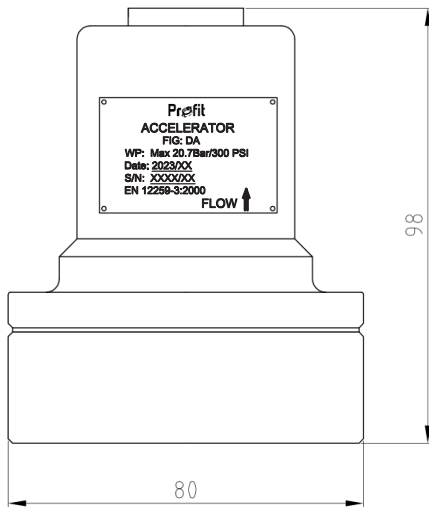
0,10 to 0,17 MPa / 1,0 to 1,7 bar / 15 to 24 psi.

Materials

- Bronze body air chamber.
- Stainless steel closing chamber.
- Diaphragm, seals and O-ring: EPDM rubber.
- Spring & bolts: stainless steel.
- Stainless steel piston.
- Shaft & seal-support: brass UNSC36000.



Dimensions

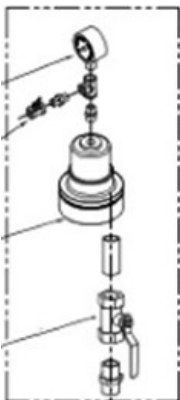


Function

- The DA will speed up the operation of the dry pipe alarm valve by identifying the quick reduction in system pressure and releasing air from the upper chamber of the device.
- The dry accelerator is positioned in a closed state by the system air pressure in the upper and lower chambers, maintaining pressure in the actuator's air chamber. Upon the release of system pressure due to a sprinkler opening, air evacuates more rapidly from the lower chamber than the upper chamber. Consequently, the pressure in the upper chamber remains relatively higher.
- When a pressure difference of 21-34 kPa / 3-5 psi arises, the DA initiates the opening, venting the lower chamber into the atmosphere. This action swiftly exhausts air from the actuator, prompting the operation of the sprinkler dry control valve.
- For more information we refer to our technical datasheets for dry pipe alarm valves.

Options

- DA accelerator + trim:
Accelerator supplied with all necessary parts to insert into the dry valve trimset.



Bill of materials:

- Ball valve (1 x 1/2" and 1 x 1/4").
 - Air pressure gauge range 0,40 MPa / 4,0 bar / 60 psi.
 - Malleable fittings.
- Also available as single spare part – accelerator only.

GENERAL INFO

- Installers should be trained or experienced to install and understand the product.
- Read and understand all technical datasheets and installation instructions before attempting to install, remove or adjust any Profit piping products.
- Depressurise and drain the sprinkler installation system before attempting to install, remove or adjust any Profit piping products.
- Never work on piping systems that are pressurised and / or filled with water.
- Piping Logistics reserves the right to change specifications, designs and / or standard equipment without notice and without incurring in any obligations.
- Use the necessary Personal Protection Equipment (PPE) to avoid personal injury (helmet, safety shoes and goggles, Profit gloves).



Failure to follow these instructions could result in death or serious injury and property damage.

We advise to always store our products in closed and dry environments, the products do not need any specific maintenance once installed on an aboveground sprinkler installation.

REVISION TABLE

Date	△	Notes
05/02/2024		Initial release.