

Profit pressure gauges type PG/0-25bar/FM are gauges designed and approved for use in fire sprinkler pipe systems & HVAC. The model is based on the proven Bourdon tube measuring system.

Characteristics

- Can be used for medium water or air.
- Suitable for indoor and outdoor use, protection class IP44.
- Pressure element: Bourdon tube in copper alloy.
- Corrosion resistant casing.
- Dual scale 0-25bar/ 0-360 PSI.
- Including pointer stop pin.
- FM approved (WIKA 111.10.100).
- Accuracy class : class 1.6.



Pressure limitations

- Steady : ¾ of full scale.
- Fluctuating : 2/3 of full scale.
- Short time : full scale value.

Working temperature

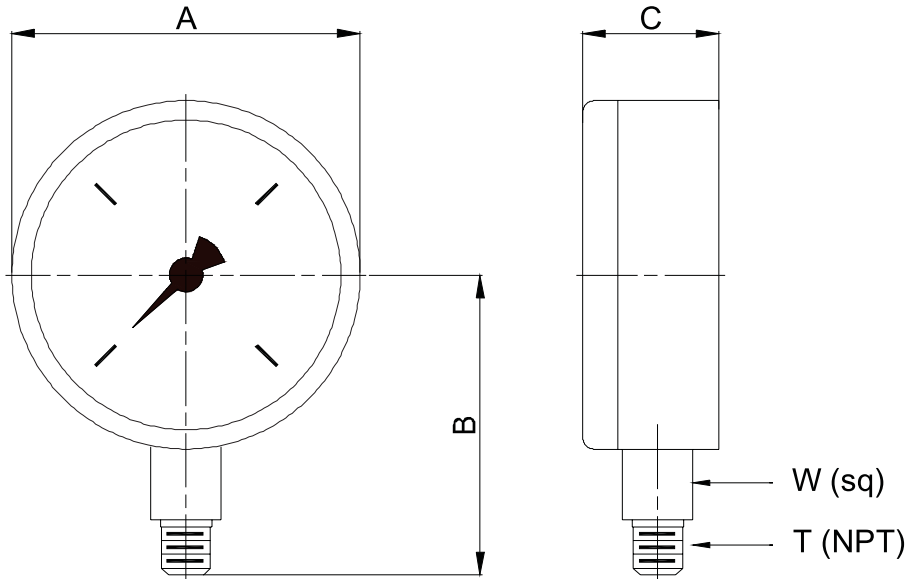
- Ambient: -20° to +60 °C
- Medium: maximum +60°C

Material specifications

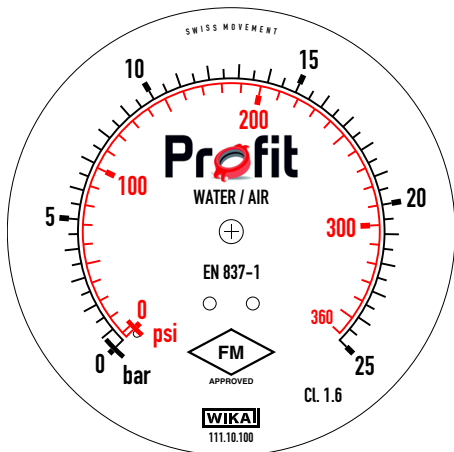
Part N°	Part	Material
1	Case	Plastic, black
2	Bottom connection (EN 837-1/7.3)	Copper alloy
3	Pressure element	Copper alloy, C-type
3	Dial	Aluminium, white
4	Pointer	Plastic, black
5	Case	Plastic, black
6	Window	Plastic, crystal clear

Dimensions

Dimensions (mm/inch)					
Size	A	B	C	W	T
100	99	83,5	30,5	14x14	¼" Npt



Marking



**Storage and handling**

- Upon receipt, carefully check complete the gauge on any damage during shipment.
- Pressure gauges must be stored indoor, protected from moist.
- This is a precision measuring device, please handle with care, avoid shocks at all times.

**Installation**

1. Please use appropriate sealing material on te thread.
2. Do not use the housing to apply torque when mounting the gauge, only torque the metal square bottom-connector with suitable tool.

Application example: Profit wet alarm valves FACV & GACV